

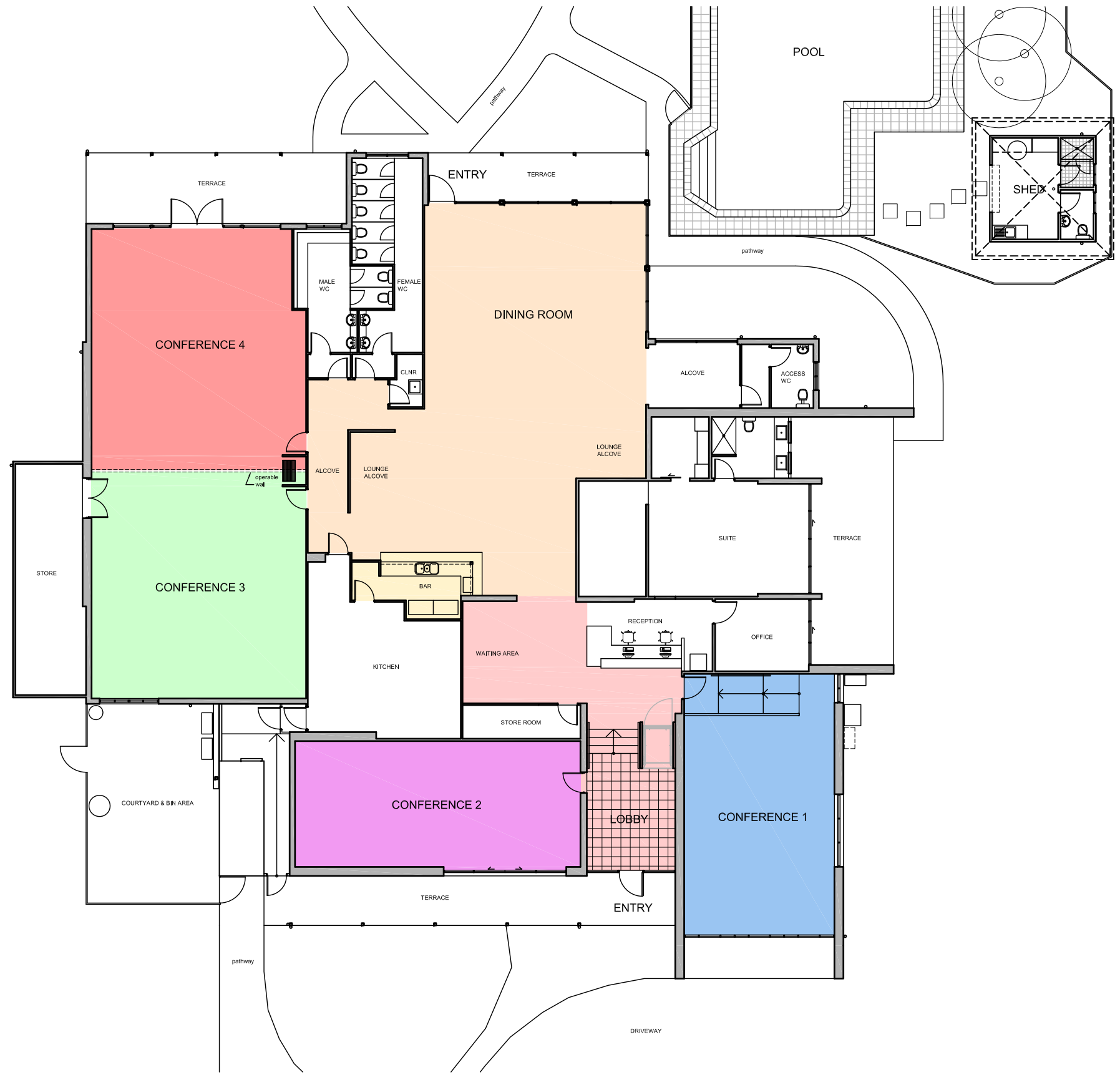


# INVERCAULD HOUSE

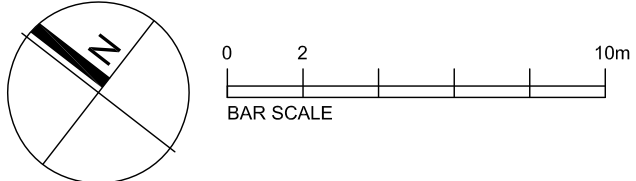
*conferences - retreats - accommodation*

## Conference Rooms and Seating Plans





# INVERCAULD HOUSE CONFERENCING RETREAT & ACCOMMODATION



# Conference Room 1

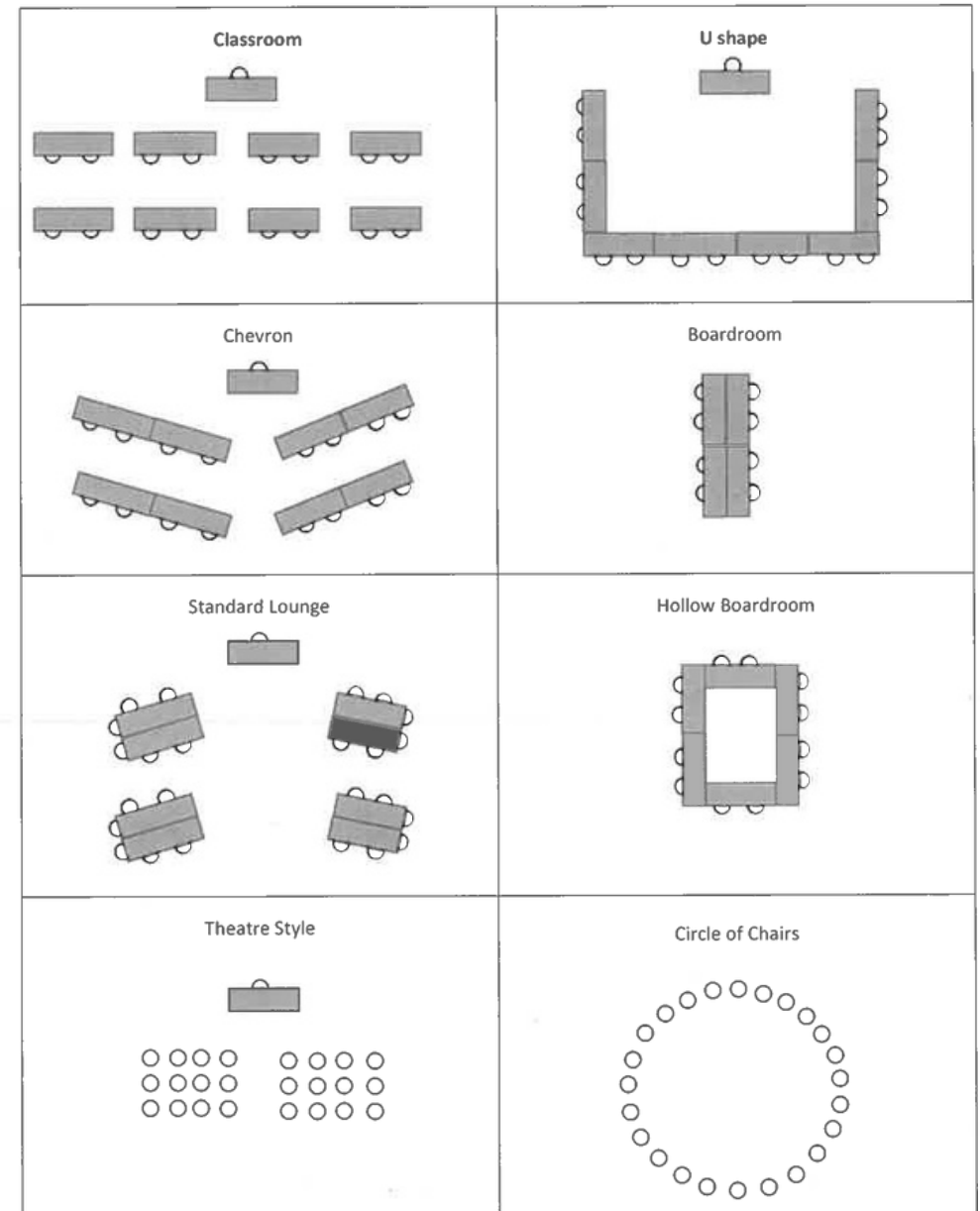


INVERCAULD  
house

Full Day Hire (8am-5pm) = \$333.00

Half Day Hire (8am-12pm or 12pm-5pm) \$200.00

Capacity: 30 = maximum, 25 = comfortable



# Conference Room 2

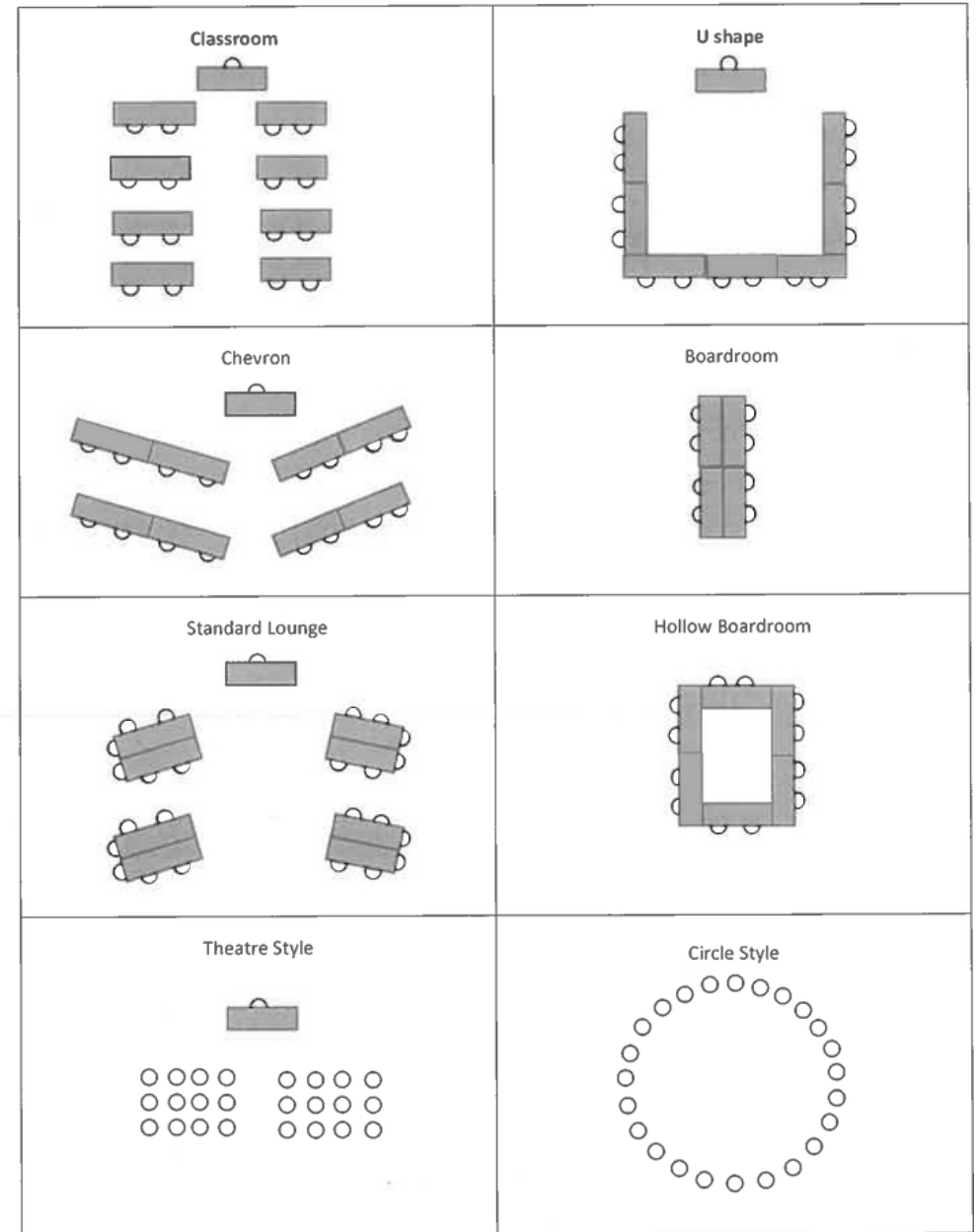


INVERCAULD  
house

Full Day Hire (8am-5pm) = \$333.00

Half Day Hire (8am-12pm or 12pm-5pm) \$200.00

Capacity: 30 = maximum, 25 = comfortable



# Conference Room 3&4



INVERCAULD  
house

## Individual Conference Room

Full Day Hire (8am-5pm) = \$400.00

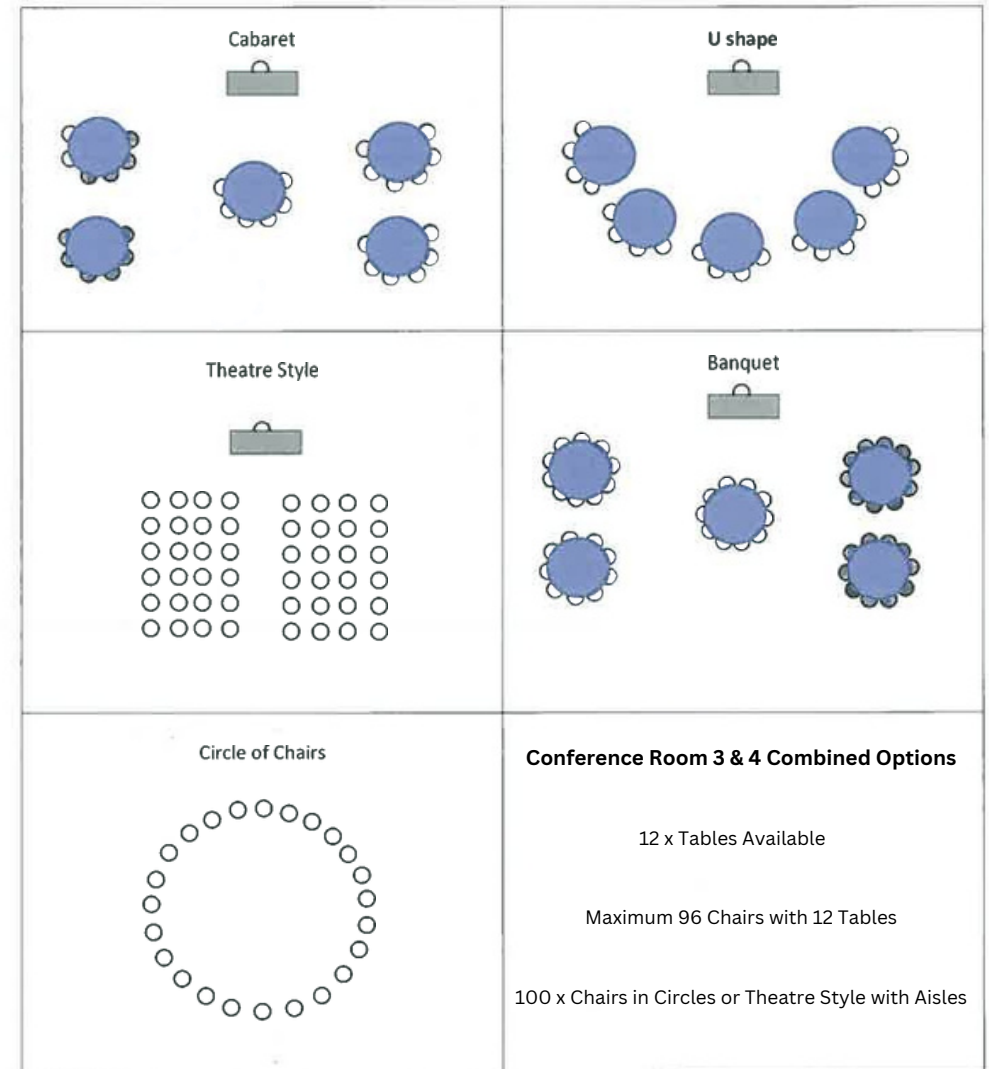
Half Day Hire (8am-12pm or 12pm-5pm) = \$200.00

Capacity: 50 = maximum, 40 = comfortable

## Combined

Full Day Hire (8am-5pm) = \$665.00

Capacity: 150 = Maximum Cabaret, 100 = comfortable Cabaret,  
& 200 = Theatre



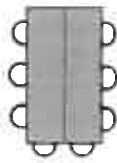


**INVERCAULD HOUSE**  
*conferences retreats accommodation*

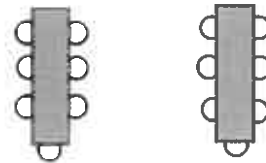
## Conference Room 5 Setup Options

Various setups are available – maximum capacity approximately 15 guests

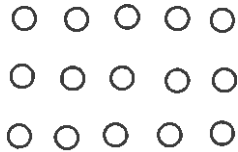
**Boardroom**



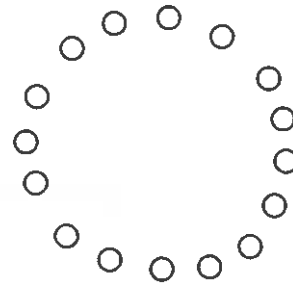
**Classroom**



**Theatre Style**



**Circle of Chairs**





ENTRANCE

GUEST PARKING

VISITOR PARKING

DISABLED PARKING

CARETAKER'S COTTAGE

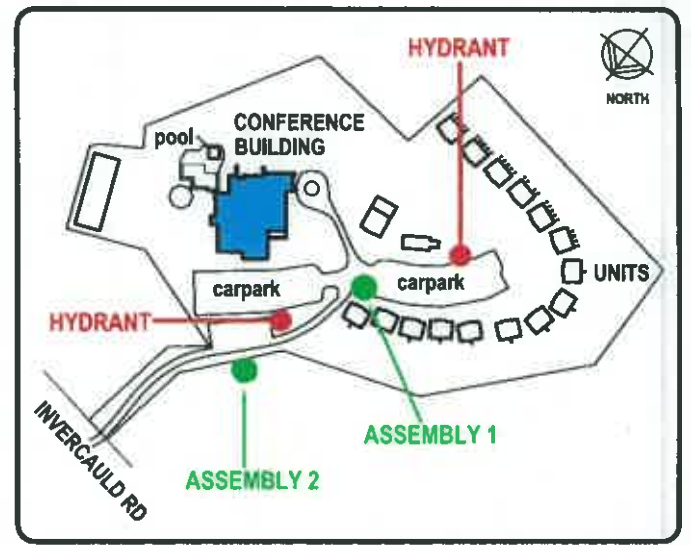
INVERCAULD HOUSE

RECEPTION

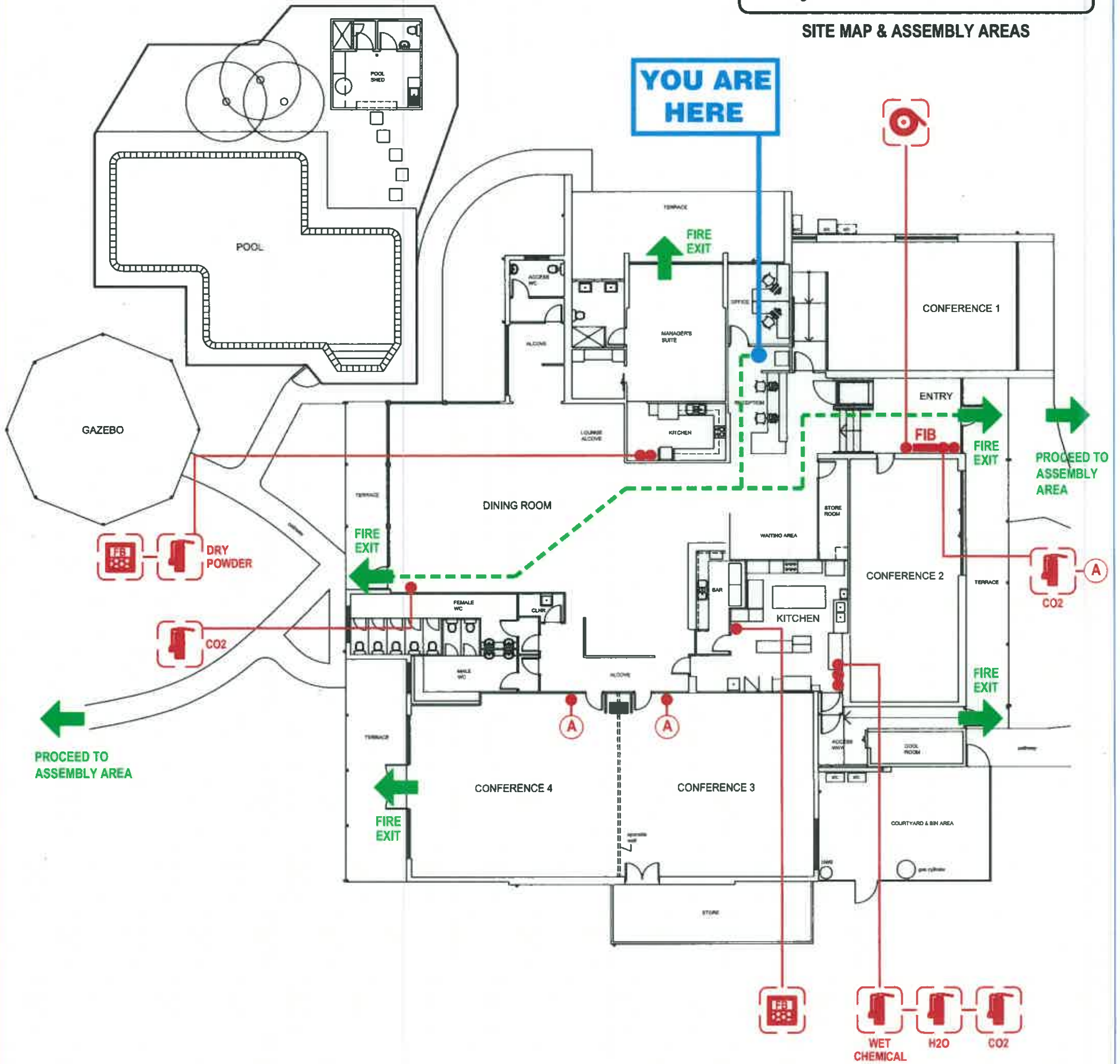
POOL

GUEST KITCHEN





SITE MAP & ASSEMBLY AREAS



**EMERGENCY NUMBER**

**Dial 000**

Also advise Reception of your location and status of emergency

Refer to Emergency Procedures for additional information

**FIRE & EMERGENCY OPTIONS**

- R** REMOVE PEOPLE FROM IMMEDIATE DANGER AREA
- A** ALERT OTHER PEOPLE IN THE VICINITY OF THE FIRE/EMERGENCY
- C** CONFINE FIRE/SMOKE
- E** EXTINGUISH (IF SAFE TO DO SO)

**ASSEMBLY AREAS**

- Account for people in the building
- Report any person missing to the Fire Brigade and/or the responding authorities
- DO NOT re-enter the building until the "ALL CLEAR" is given by the responding emergency services

**LEGEND**

- FIRE EXIT
- Exit Route
- Fire Hose Reel
- Fire Extinguisher
- Fire Blanket
- Fire Indicator Board
- Manual Alarm Point

**EVACUATION DIAGRAM**